

Sizewell C
The power of good for Britain

Community Newsletter



The latest news and updates
from the Sizewell C project.

NOVEMBER 2024

Welcome

As 2024 comes to a close, we look back on the last twelve months as a hugely significant year for Sizewell C.

Since triggering our Development Consent Order and formally entering the construction phase in January, we've made huge progress across the project.

We secured our Nuclear Site Licence in May and signed major equipment contracts, work is progressing at pace on site and at our off-site infrastructure, and we'll soon have around 1,000 people working across all our sites. We're also investing heavily in the region, with £2bn of the £14bn that we will spend with UK-based companies to be spent right here in Suffolk.

Looking ahead to 2025, we're excited about the next steps of the project. After the government reaffirmed its commitment to the project in its October Budget, we now have a clear timeline for Sizewell C's funding. The Capital Raise process to bring private investors into the project is moving to its final stages and will be concluded in spring 2025, with a Final Investment Decision (FID) taken as part of next year's Spending Review.

The project has taken a step up, and we know that our work will be seen and felt more in the areas we're active. We will always do everything we can to minimise disruption and ensure we provide clear information about our activity.

In this latest newsletter, you'll hear about all the latest news and what's coming up for the project. We hope you find it useful.

Julia Pyke and Nigel Cann
Joint Managing Directors



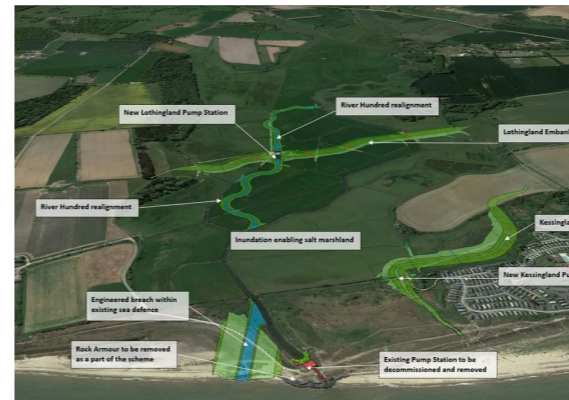
Searching for artists in Suffolk

We've teamed up with First Light Festival CIC to launch a unique 3-year programme of creative residencies across visual art, writing and poetry at Sizewell. We announced the brilliant local artist Les Bicknell for our first residency - in the visual arts - earlier this month.



£25m commitment to coastal defence project

We committed £25m to an essential drainage and flood protection scheme close to the A12, which will begin construction in 2025. The Benacre and Kessingland Managed Realignment Scheme will protect dozens of local properties and farmland south of Lowestoft and help to significantly reduce the number of road closures due to flooding on the A12.



New Sizewell C Youth Council set up

Fifteen students from Alde Valley Academy in Leiston are the first to be part of a new Sizewell C Youth Council - to help represent the local youth voice for the project and identify areas of need.



Teaming up with WildEast

In September, we announced an exciting new partnership with environmental organisation WildEast, which aims to increase rewilding and environmental protection across East Anglia.



Latest news

Employability hub opens in Lowestoft

Nucleus is a brand-new employability hub that we've launched in partnership with East Coast College. Nucleus aims to provide employment search assistance and application and interview support to those looking to secure employment in the region.



New jobs fair series with DWP

More than two hundred people attended our first jobs fair with the Department of Work and Pensions (DWP) in Leiston - we'll be holding more of these across the region in 2025.



Launch of local jobs pledges

We made the first of our local jobs pledges in October, committing 500 of our construction jobs for people in Ipswich. We followed it up by pledging another 500 jobs for people in Lowestoft.



FRONT COVER IMAGE

Sizewell C Youth Council with Dan Mayhew Kingfisher Schools Trust
Steve Mannings DCO Delivery Lead
Julia Pyke Joint Managing Director
Damian Leydon Site Delivery Director
and Marjorie Barnes Head of Regional External Affairs and Development

Find out about the key activity across all our sites.



Park and ride schemes



Our park and ride facilities will enable us to bus our teams to site – and reduce traffic on local roads.

01 Northern Park and Ride (Darsham)

Starts: Q2 2024 **Ends:** Q1 2026

Work on our Northern Park and Ride facility on Willow Marsh Lane is well underway. We're currently preparing the site – including clearing vegetation – to enable archaeology works to begin.

To create a safe working environment, we'll also be creating a site entrance and a welfare compound – complete with car parking, portacabin facilities, and safe walkways. Once complete, the facility will provide parking for up to 1,250 cars.

02 Southern Park and Ride (Wickham Market)

Starts: Q2 2024 **Ends:** Q4 2026

Our Southern Park and Ride is progressing too. We've installed fencing at the site, our ecologists are overseeing a phased vegetation clearance, and our archaeologists have begun their meticulous work.



Freight management



We're working to develop the very best logistics – and reduce potential congestion on local roads.

03 Orwell Logistics Park

Starts: Q2 2024 **Ends:** Q4 2024

We're establishing two additional warehouse facilities and a dedicated Freight Management Facility (FMF) at Orwell Logistics Park in Ipswich, which – with 1m sq ft of space available – will be a vital part of how we manage our lorries and goods during the construction phase. The two new warehouse structures are being constructed to increase the site's storage and logistics capacity.

Both warehouses are progressing steadily: the structural frameworks are nearly complete, and we've started work on the external cladding.

We've made significant progress on the Freight Management Facility (FMF) too. The FMF will serve as a critical hub for the coordination of incoming deliveries, ensuring smooth traffic management and reducing congestion in the local area. We've completed the groundworks and foundation stages, and assembled the steel framework.



Major road schemes



We're busy making key upgrades to local roads and starting work on vital new ones for the project.

04 Sizewell Link Road

Starts: Q3 2024 **Ends:** Q2 2027

Our ecologists and archaeologists are working in the area in advance of constructing the permanent 6.5km road which will take our construction traffic away from the B1122, bypassing Theberton and Middleton Moor.

05 Two Villages Bypass (Farnham and Stratford St Andrew)

Starts: Q3 2024 **Ends:** Q4 2026

This will be a new 1.8km road around Farnham and Stratford St Andrew. Our contractors are clearing topsoil off Tinker Brook in Stratford St Andrew in advance of archaeologists starting work, with construction expected to start in the first half of next year. The road will be accessible from a new roundabout at Friday Street – and we're beginning early works such as archaeology there to prepare the site for construction, which we expect to start in Q2 2025.

Yoxford Roundabout

Starts: Q3 2024 **Ends:** Q2 2026

We've started preparatory work for a new roundabout at the junction of the A12 and B1122 east of Yoxford. The roundabout will have a long-term benefit for the area, significantly improving safety on a part of the road that is known locally as a risk for drivers.

Following vegetation clearance, which has already significantly improved visibility for drivers along the road, we'll be moving onto archaeology and utilities work, and we'll be looking to start construction early in 2025. We've designed the roundabout so that it can be principally built without affecting the normal operation of the A12.



Rail schemes



We'll be delivering 60% of construction materials by rail or sea – and in early 2025 we'll make our first rail movements to build a new Green Rail Route.

We're creating a new rail route (Green Rail Route) that runs from the existing Sizewell Branch Line into our Temporary Construction Area (TCA). The East Suffolk Line and Sizewell Branch Line are also key for us to deliver materials to our Ancillary Construction Area (ACA).

Work on the Sizewell Branch Line and the Green Rail Route (which bypasses Leiston) has begun – and we're busy with surveys and enabling works.

We've been working in Buckleswood Road in Leiston, where we're creating a railway works compound in support of improvements to the existing Sizewell Branch Line (SIZ), level crossings, signalling and the construction of the Green Rail Route. We are also busy constructing a temporary compound to enable archaeology to commence on site prior to the construction of the rail works.

Archaeology is expected to finish in early 2025.

Main development site



Our main development site is: our Main Construction Area (MCA); our Temporary Construction Area (TCA); and our Ancillary Construction Area (ACA).

Vegetation clearance

We've been working with local authorities to clear vegetation to create access points at our various sites. Guided by our ecologists, we're doing this now because it's the best time for wildlife, avoiding the nesting season. We know this can look quite stark in some areas, but we're only removing vegetation that we absolutely have to. We'll also be replacing far more than we remove overall.

Our works have been progressing in Lover's Lane, Abbey Road, Eastbridge Road and Buckleswood Road in Leiston and will be complete in March 2025.

Preparing for sea defences

As we prepare to construct temporary sea defences and cross-shore infrastructure, so we can maximise delivery of construction materials by sea, we created a temporary diversion around an 800m portion of pathway along Sizewell beach.

There's still normal access to the beach and sand dunes, so people can continue to enjoy the beach as normal. The diversion will be in place for the duration of the construction period.

Accommodation Campus

Starts: Q2 2024 **Ends:** 2028

With up to 2,400 beds and a recreation building, our accommodation campus is a core part of our strategy to house our workforce. Located on our Temporary Construction Area (TCA), we've now begun archaeology work on the campus.



New nature reserves

Alongside our flagship 67-hectare Wild Aldhurst nature reserve in Leiston, we have plans for wetland habitat creation at three additional nature reserves: Benhall, Halesworth (both East Suffolk), and Pakenham (West Suffolk).

Work at Benhall began in summer 2023 and major works are now complete, while Halesworth and Pakenham are set to begin later in 2024 and 2026 respectively. In total, Sizewell C's work is expected to lead to an increase in biodiversity of 19%.

First groups benefit from **£23m** **SIZEWELL C COMMUNITY FUND**

Sports clubs, advice agencies and community facilities were among the very first organisations to receive grants from the £23m Sizewell C Community Fund last month.

The money is being awarded to projects in the East Suffolk Council area which promote the economic, social or environmental wellbeing of the communities most impacted by the construction of Sizewell C, and which enhance people's quality of life.

Around £2m is being made available to local organisations each year for the next ten years.

The latest round is open for applications and closes on Sunday 19th January 2025 at 23:59. The next round opens immediately after.

In the first round of awards, nine charities and not-for-profit groups which deliver services in the East Suffolk received grants amounting to more than £300,000.

For more information, eligibility criteria, and how to apply, visit sizewellcfund.org.uk or call **01473 602 602**.

CITIZENS ADVICE EAST SUFFOLK £170,000

This funding will enable us to manage the increase in demand on our services and continue to provide advice and support to local residents and to our local community.



Chiara Saunders
Chief Executive
Citizens Advice East Suffolk

LEISTON YOUTH AND COMMUNITY ANGLING SOCIETY (LYCAS) £7,000

Angling and being out in the great outdoors can have a hugely positive effect on your mental health, and the funding means we can offer that benefit to even more people in our community.



Phil Wood
Coach at LYCAS

YOUNG PEOPLE TAKING ACTION (THE CYDS PROJECT) £19,000

This funding will enable us to offer support to more young people, open our centres for more hours each week, and allow our staff to do detached work around the streets of Leiston, Saxmundham and local villages to engage with young people.



Stuart Watson
Project Manager
Young People Taking Action

ALDEBURGH JUBILEE HALL £30,000

This funding will play a key role in allowing us to put on a wider, more diverse programme of events at the Jubilee Hall. As a result, we can strengthen our work within the community, enhancing the inclusive initiatives that are so important to what we aim to do.



Ann Barkway
Chair of Trustees
Aldeburgh Jubilee Hall

Who works at Sizewell C?

In each newsletter, we spotlight some of the amazing people who work on site.

Charlotte Bond, Creative Content Producer

"I am always learning new things at Sizewell C. The project is always evolving and you evolve with it."

As Creative Content Producer for Sizewell C, I capture key moments and progress on site, as well as events off site in the wider community. Each day is different, whether it's taking photos of a charity walk, filming updates about the construction site, or travelling to other parts of the country to learn from other teams, such as Hinkley Point C. I love that variety and I really enjoy meeting new people and listening to their stories.

I've lived in Suffolk all my life and I couldn't think of a better place to call home. As a professional photographer, I find there's always something interesting to capture – from the warmth and friendliness of the people to our beautiful coastline and majestic landscapes.



Stuart Allsopp, Jobs Service Lead

"It isn't just about jobs – by investing in the people of our local communities, I really believe we can change lives."

As Jobs Service Lead, I work in partnership with our contractors, schools and higher education institutions, skills providers and charities to make jobs and opportunities at Sizewell C as accessible as possible.

I'm passionate about it – and I love the idea that we can bring communities together and leave a genuine legacy in the region.

I live in the Woodbridge area and I've been here for nearly twenty years. I love getting out in Suffolk. I'm always exploring new places, going on beach walks, fishing, or heading out on my mountain bike to Rendelsham Forest or the Viking Trail.



☎ FREEPHONE 0800 197 6102*

💻 www.sizewellc.com

@sizewellc

✉ info@sizewellc.com

📮 FREEPOST SZC

📍 Sizewell C Information Office,
48-50 High Street, Leiston IP16 4EW


The power of **good for Britain**